

GATE FITTINGS

[BARNTRACK & FITTINGS](#)

[CANTILEVER GATE FITTINGS](#)

[CENTERSTOPS](#)

[CLAMPS](#)

[FORK LATCH](#)

[GATE CLOSERS](#)

[GATE CORNERS](#)

[HINGES - INDUSTRIAL](#)

[HINGES - INDUSTRIAL - BALL & SOCKET](#)

[HINGES - RESIDENTIAL](#)

[HINGES - RESIDENTIAL - STRAP HINGE](#)

[HOLDBACKS](#)

[I BEAM](#)

[J BOLT HINGE](#)

[KENNEL FITTINGS](#)

[LAG SCREWS](#)

[LATCH - INDUSTRIAL - DOUBLE](#)

[LATCH - INDUSTRIAL - SINGLE](#)

[LATCH - RESIDENTIAL - AUTOMATIC](#)

[LATCH - RESIDENTIAL - BUTTERFLY](#)

[LATCH - RESIDENTIAL - DOUBLE](#)

[LATCH - RESIDENTIAL - SINGLE](#)

[ORNAMENTAL HARDWARE](#)

[OVERHEAD SLIDE GATE FITTINGS](#)

[PANIC BAR](#)

[ROLLING GATE HARDWARE](#)

[ROUND POST HARDWARE](#)

[SCROLLS](#)

[WALL BRACKET](#)

[WHEEL FOR SWING GATE](#)

[WOOD POST HINGES](#)

Code	Item	Wt. Per 100	Bundle Quantity	Price
------	------	----------------	--------------------	-------

GATE CORNERS

ALUMINUM GATE CORNER — HEX — Die Cast / Not Drilled

Order (4) - 1/4" x 2" Machine Bolts.

GCA-13H	1-3/8"	41	100	\$2.83
---------	--------	----	-----	--------



ALUMINUM GATE CORNER — Die Cast / 3-Bolt

No drilling necessary - (3) - 1/4" x 3/4" carriage bolts included.

GCA-13-3	1-3/8"	41	100	\$2.95
----------	--------	----	-----	--------



PRESSED STEEL GATE CORNER — RESIDENTIAL — 14 Gauge

GCP-13T	1-3/8" Top	71	50	\$3.35
---------	------------	----	----	--------

GCP-13B	1-3/8" Bottom	81	50	\$2.60
---------	---------------	----	----	--------



PRESSED STEEL GATE CORNER — INDUSTRIAL — 12 Gauge

Order (4)-5/16" x 2-1/2" Machine Bolts.

GCP-15	1-5/8"	150	50	\$4.93
--------	--------	-----	----	--------

GCP-2	2"	190	25	\$5.75
-------	----	-----	----	--------



SCROLLS

GATE SCROLLS — 3 PIECE

Attach with 1/4" Scroll Screws.

SCR-18	18"	108	10	\$3.08
SCR-24	24"	139	10	\$4.24
SCR-36	36"	140	10	\$8.06
SCR-48	48"	144	10	\$9.04




Code	Item	Wt. Per 100	Bundle Quantity	Price	
------	------	----------------	--------------------	-------	--

RESIDENTIAL HINGES

PRESSED STEEL FEMALE HINGE — 1" x 8 Gauge

Order 3/8" Bolt.


FHP-13	1-3/8"	40	100	\$0.87	
FHP-15	1-5/8"	46	100	\$1.08	
FHP-2	2"	48	100	\$0.95	

MALLEABLE FEMALE HINGE — (2)-Piece with bolts included


FHM-15	1-5/8"	54	100	\$1.26	
--------	--------	----	-----	--------	---

PRESSED STEEL MALE HINGE — 1" x 8 Gauge


Order 3/8" Bolt.

MHP-13	1-3/8"	58	100	\$1.34	
MHP-15	1-5/8"	60	100	\$1.81	
MHP-2	2"	67	100	\$1.20	
MHP-25	2-1/2"	69	100	\$1.19	
MHP-3	3"	115	50	\$1.60	

MALLEABLE MALE HINGE — U-BOLT — Residential Grade

MHM-2	2"	90	100	\$1.99	
MHM-25	2-1/2"	100	50	\$5.57	
MHM-3	3"	105	50	\$2.27	

RESIDENTIAL STRAP HINGE — PRESSED STEEL

SH-203	2" x 1-3/8"	94	100	\$2.52	
SH-253	2-1/2" x 1-3/8"	103	100	\$3.14	

KENNEL FITTINGS

KENNEL LATCH — PRESSED STEEL

Flip latch with U-Bolt.

KL-13	1-3/8" x 1-3/8"	10	50	\$3.14	
-------	-----------------	----	----	--------	---

KENNEL HINGE — PRESSED STEEL

Allows close fit. Insert into gate.

KH-13	1-3/8"	76	50	\$1.75	
-------	--------	----	----	--------	---

Code	Item	Wt. Per 100	Bundle Quantity	Price
------	------	----------------	--------------------	-------

RESIDENTIAL LATCHES

FORK LATCH PARTS — Pressed Steel

C-13	1-3/8" Clamp	46	100	\$0.76
C-15	1-5/8" Clamp	50	100	\$1.01
C-2	2" Clamp	57	100	\$1.12



F-13	1-3/8" Fork	30	100	\$0.73
F-2	2" Fork	37	100	\$1.09
F-25	2-1/2" Fork	39	100	\$0.92
F-3	3" Fork	85	100	\$1.04



WALL BRACKET — FOR FORK

WB	Non-Plate Type	32	50	\$0.81
----	----------------	----	----	--------



DROP FORK LATCH — PRESSED STEEL — Heavy Duty

FLP-253	2-1/2" x 1-3/8"	106	50	\$2.49
FLP-255	2-1/2" x 1-5/8"	118	20	\$3.26
FLP-305	3" x 1-5/8"	120	20	\$3.43
FLP-405	4" x 1-5/8"	144	20	\$3.12



DROP FORK LATCH — MALLEABLE — Assembled

FLM-255	2-1/2" x 1-5/8"		25	\$5.14
FLM-305	3" x 1-5/8"		25	\$5.33
FLM-302	3" x 2"		25	\$6.36
FLM-402	4" x 2"		25	\$6.75



RESIDENTIAL AUTOMATIC SWING LATCH — MALLEABLE — PAGE

SWL-203	2" x 1-3/8"	195	25	\$3.07
---------	-------------	-----	----	--------



Code	Item	Wt. Per 100	Bundle Quantity	Price
------	------	----------------	--------------------	-------

AUTOMATIC CLOSERS AND LATCHES

GRAVITY GATE CLOSER

GCG203	2" x 1-3/8"	330	10	\$19.52
GCG253	2-1/2" x 1-3/8"	350	10	\$21.90
GCG255	2-1/2" x 1-5/8"	360	10	\$23.90
GCG303	3" x 1-3/8"	380	10	\$22.72
GCG305	3" x 1-5/8"	380	10	\$24.72



AUTOMATIC GATE CLOSER

GC-203	2" x 1-3/8"	100	12	\$16.49
GC-253	2-1/2" x 1-3/8"	110	12	\$17.72



KANT SLAM CLOSER — HYDRAULIC — Indoor or Outdoor

KANT				\$83.05
------	--	--	--	----------------



BUTTERFLY LATCH

BL-203	2" x 1-3/8"	128	30	\$3.91
BL-253	2-1/2" x 1-3/8"	132	30	\$4.27




RECEIVER — Residential

REC-2*	Receiver - 2"	25	20	\$1.48
--------	---------------	----	----	---------------



* (Limited Availability)


Code	Item	Wt. Per 100	Bundle Quantity	Price	
<u>AUTO-CATCH LATCH — DAC</u>					
ACL-133	1-3/8" x 1-3/8"	120	10	\$26.75	
ACL-203	2" x 1-3/8"	120	10	\$26.75	
ACL-253	2-1/2" x 1-3/8"	150	10	\$26.75	
ACL-255	2-1/2" x 1-5/8"	160	10	\$39.97	
ACL-305	3" x 1 5/8"	170	10	\$40.04	
ACL-302	3" x 2"	170	10	\$38.61	

RESIDENTIAL DOUBLE GATE LATCHES


RESIDENTIAL STRONG ARM LATCH — Double Drive

DDR-SAL	1-3/8" Strong Arm Latch	12	\$32.52	
---------	-------------------------	----	---------	---

FENCE LOC — CARGO PROTECTORS — Double Drive


DDR-FLB	1-3/8" — Locks in the center	15	\$27.29	
---------	------------------------------	----	---------	--

RESIDENTIAL DOUBLE DRIVE LOCKING DEVICE — Aluminum


RDDA-36	36" Fork Alumin	290	10	\$8.82	
RDDA-44	44" Fork Alumin	303	10	\$10.64	

WOOD POST HINGES

LAG SCREW MALE

LSM-4	5/8" x 4-1/2"	54	100	\$1.97	
LSM-6	5/8" x 6"	63	100	\$2.59	

J-BOLT MALE

JBM-45	5/8" x 4-1/2"	90	100	\$2.02	
JBM-10	5/8" x 10"	150	50	\$3.78	
JBM-12	5/8" x 12"	180	50	\$4.26	

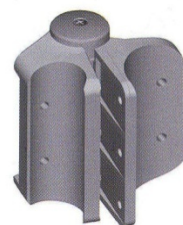
MALE PLATE

MP	Male Plate	44	25	\$1.85	
----	------------	----	----	--------	---

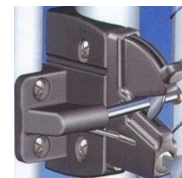
Code	Item	Price
------	------	-------

D & D - ROUND POST HARDWARE

TCHDRND1-MK2	Tru-Close Round Post Hinge Molded Reinforced Polymer Black Internal Stainless Steel Spring. Self-closing. For Gates Up To 132# 2" - 3" Gate Post; 1 3/8" - 1 5/8" Gate Frame	\$71.01
--------------	--	---------



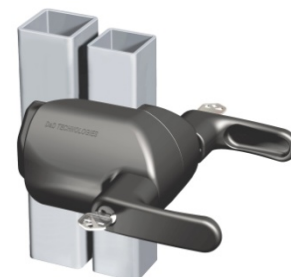
TCAMA2RND	MULTI ADJUST REGULAR CHAIN LINK	\$59.56
LLABRND	LOKK-LATCH ROUND POST w/ EAK	\$55.90
MLS2RPAKA	ROUND POST ADAPTER MAGNA LATCH	\$16.11



D & D - ORNAMENTAL GATE HARDWARE

Latches

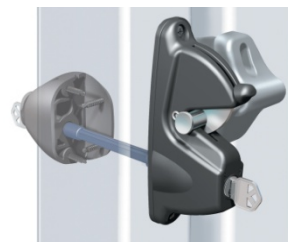
MLTPS2BGA	MAGNA LATCH TOP PULL 20"	\$77.08
MLVPS2BGA	MAGNA LATCH VERTICAL PULL 14"	\$73.05
ZL1A-K	Z LOKK 1" - 1 5/8" Gate Frame	\$99.08
ZL2A-K	Z LOKK 1 3/4" - 2"-1/2" Gate Frame	\$104.52
LLAA	LOKK LATCH SERIES 2 RESIDENTIAL LATCH ONLY	\$29.18
LLAAB	LOKK LATCH SERIES 2 RESIDENTIAL w EAK	\$48.47
LLDA-K	LOKK-LATCH DELUXE (LATCH ONLY)	\$59.89
LLDAB-K	LOKK-LATCH DELUXE (LATCH + EAK)	\$90.38
LLP1S-K	LOKK LATCH PRO with EAK	\$131.15



Z LOKK

Hinge Regular/Residential

TCA1L2-MK2	TRU-CLOSE 2 LEG METAL	\$48.12
KFA	KWIK FIT ADJUSTABLE TENSION	\$39.76
TCAMA2	MULTI ADJUST REGULAR METAL/WOOD/VINYL	\$58.97



LOKK LATCH
DELUXE (LLDAB-K)

Hinge Heavy Duty / Commercial / Industrial

TCHDMA1	MULTI ADJUST HEAVY WOOD/VINYL	\$78.48
---------	-------------------------------	---------

Accessories

LLHBG	RESIDENTIAL GATE HANDLE SQUARE	\$5.50
LB124BX-KSA	LOKK BOLT 24" BLACK metal	\$89.33
LB224BX-KSA	LOKK BOLT 24" BLACK wood/vinyl	\$89.29

LOCINOX GATE HARDWARE

Code	Description	Bundle Qty	Price
LX-LAKY40FBL	Narrow Ornamental Lock, Blk 1 1/2" - 2"	10	\$109.96
*Note: Must Order ONE of the Keepers Below with Narrow Ornamental Lock			
LX-IKIT60BL	Residential Gate Keeper Offset , Black	10	\$25.76
LX-SAKLQFBL	Residential Keeper Quick Fix 1-1/2" - 4"	10	\$24.50
LX-SHKLQFBL	Security Keeper Quick Fix, Black	10	\$31.42
<u>Latch Kits</u>			
LX-MSGK-S	Mechanical Code Swing Gate Lock Silver	10	\$601.66
LX-SSGK-S	Industrial Security Swing Gate Lock Silver	10	\$167.58
LX-CGK-S	Cantilever Gate Lock Silver	10	\$192.15




*** All Latch Kits include Lock, Keeper, Round Post Adapters, and Chain Link Adapter**

ORNAMENTAL GATE HARDWARE

*** Black**

Code	Description	Price
CH100N-BK*	Cornerstone Nylon Self-Close Hinge 4"	\$47.87
NW308-26*	The Protector - Magnetic Pool Latch 10" High	\$61.11
NW276NE-26*	The Protector - Magnetic Pool Latch 19-1/2" High	\$66.47

SWING GATE WHEEL

SGW-P	For Pipe	900	5	\$70.50	
SGW-W	For Wood	1000	5	\$67.84	
<u>SWING GATE WHEEL — SWIVEL — FOR PIPE</u>					
SGW-S15	For 1-5/8" Pipe	900	5	\$58.84	
SGW-S20	For 2" Pipe	1000	5	\$58.91	
SGW-S	Swivel Wheel w/ Spring		5	\$35.49	

Code		Wt. Per 100	Bundle Quantity	Price
------	--	----------------	--------------------	-------

INDUSTRIAL HINGES

INDUSTRIAL ARM HINGE — MALLEABLE

AHM-25	2-1/2"	440	12	\$9.53
AHM-3	3"	460	12	\$12.57
AHM-4	4"	550	12	\$13.64
AHM-65	6-5/8"	1090	4	\$31.93



INDUSTRIAL ARM HINGE — PRESSED STEEL — 180° Degree Heavy Duty

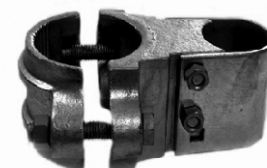
AHP-25	2-1/2"	300	12	\$7.81
AHP-3	3"	400	12	\$8.33
AHP-35	3-1/2"	375	10	\$23.69
AHP-4	4"	450	12	\$8.65
AHP-45	4-1/2"	450	10	\$33.78
AHP-65	6-5/8"	750	4	\$13.78



INDUSTRIAL BOX HINGE — MALLEABLE

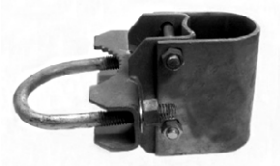
Fits 1-5/8" or 2".

BHM-25	2-1/2"	400	12	\$10.77
BHM-3	3"	400	12	\$12.21
BHM-35	3-1/2"	430	12	\$17.49
BHM-4	4"	450	12	\$13.45
BHM-65	6-5/8"	1140	4	\$32.28
BHM-85	8-5/8"	1650	4	\$52.74



INDUSTRIAL HINGE SET — BULLDOG — Pressed Steel U Bolt

BHP-25B	2-1/2"	270	12	\$8.33
BHP-3B	3"	280	12	\$9.02
BHP-35B	3-1/2"		10	\$44.86
BHP-4B	4"	310	12	\$9.70
BHP-45B	4 1/2"	325	12	\$31.72
BHP-65B	6-5/8"	500	4	\$14.35



Code		Wt. Per 100	Bundle Quantity	Price	
INDUSTRIAL HINGES					

INDUSTRIAL HINGE SET — PRESSED STEEL

BHP-25	2-1/2"	370	12	\$8.23
BHP-3	3"	430	12	\$8.23
BHP-4	4"	680	12	\$9.18
BHP-65	6 5/8"	750	12	\$15.58



INDUSTRIAL HINGE SET — PRESSED STEEL — Domestic

BHP-25D	2-1/2 "	350	12	\$24.89
BHP-3D	3"	441	12	\$25.42
BHP-4D	4"	475	12	\$26.94
BHP-65D	6-5/8"	750	6	\$44.88
BHP-85D	8-5/8"	850	6	\$57.18



INDUSTRIAL BALL & SOCKET HINGE — MALLEABLE — Page

BSH-305	3" x 1-5/8"	925	4	\$112.11
BSH-302	3" x 2"	1025	4	\$150.21
BSH-402	4" x 2"	1035	4	\$179.23
BSH-652	6-5/8" x 2"	1236	2	\$227.22



180° DEGREE ADAPTER — Fits 2" Butt Plate

ADAPT-2	Allows Full Swir	530	10	\$13.19
---------	------------------	-----	----	---------

BEARING WASHERS

BW-15	1-5/8"	15	100	\$1.60
BW-2	2"	15	100	\$1.99



Code	Item	Wt. Per 100	Bundle Quantity	Price
------	------	----------------	--------------------	-------

INDUSTRIAL LATCHES - SINGLE GATES

INDUSTRIAL DROP FORK LATCH — PRESSED STEEL

Allowance is 1-5/8".

SL-305	3" x 1-5/8"	325	20	\$12.99
SL-302	3" x 2"	340	20	\$12.99
SL-402	4" x 2"	365	20	\$13.31



INDUSTRIAL FULCRUM LATCH — ANCHOR

IFL-302A	3" x 2"	350	10	\$23.02
IFL-402A	4" x 2"	450	10	\$23.58



STRONGARM LATCH

SAL-3	3" x 2"	350	15	\$48.65
SAL-4	4" x 2"	375	15	\$52.51



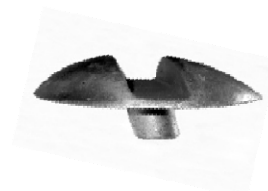
INDUSTRIAL AUTOMATIC SWING LATCH — Malleable — PAGE

SWL-4	4"	404	10	\$40.38
SWL-WALL	Flat Wall	253	10	\$18.35



CENTERSTOPS

CS-A	Aluminum	170	10	\$5.50
CS-P	Pressed Steel	116	25	\$5.98
CS-M	Malleable	370	10	\$10.77



HOLDBACKS

HB-M	Malleable	248	25	\$5.39
HB-P-A	Pressed Steel Domestic			\$18.34



DROP RODS

DR-30	1/2" x 30"	165	10	\$3.39
-------	------------	-----	----	--------



Code	Item	Wt. Per 100	Bundle Quantity	Price
INDUSTRIAL LATCHES - DOUBLE DRIVE GATES				

PAGE DOUBLE DRIVE LOCKING DEVICE — Malleable

DD-15P*	1-5/8"	900	5	\$175.28
DD-2P*	2"	950	5	\$176.36

* Discontinued Items - Limited Quantities Available

FENCE-LOC — CARGO PROTECTORS — POSITIVE

DD-FFLB	Locks on one side — 1 5/8" or 2"	20		\$37.24
---------	----------------------------------	----	--	---------

PIONEER LATCH

DD-PIONEER			15	\$79.53
------------	--	--	----	---------

STRONGARM LATCH — 1 5/8" or 2" — ADJUSTABLE 2" to 8"

DD-SAL	Strong-arm Latch		6	\$62.40
DD-SALB	Strong-arm Latch - Black			\$89.53
DDR-SAL	Residential Strong-arm Latch		12	\$32.52
DD-SALI	Strong-arm Latch-Imp		12	\$67.69

DDR-SALI	Residential Strong-arm Latch-Imp		10	\$43.67
----------	----------------------------------	--	----	---------

INDUSTRIAL LATCHES - DOUBLE DRIVE GATES

DD-IMP	1-5/8" or 2"	86	8	\$21.06
LHL-R	2" Round Post			\$29.89
LHL-S	2" Square Post			\$29.89

INDUSTRIAL DOUBLE DRIVE LOCKING DEVICE — FORK & GUIDES

DD-15G	1-5/8" Guide	98	75	\$1.92
DD-2G	2" Guide	105	75	\$1.92
DD-FC	1-5/8" or 2"	105	50	\$2.60
DD-FC15	1-5/8" Welded Kit			\$26.40
DD-FC2	2" Welded Kit			\$26.40

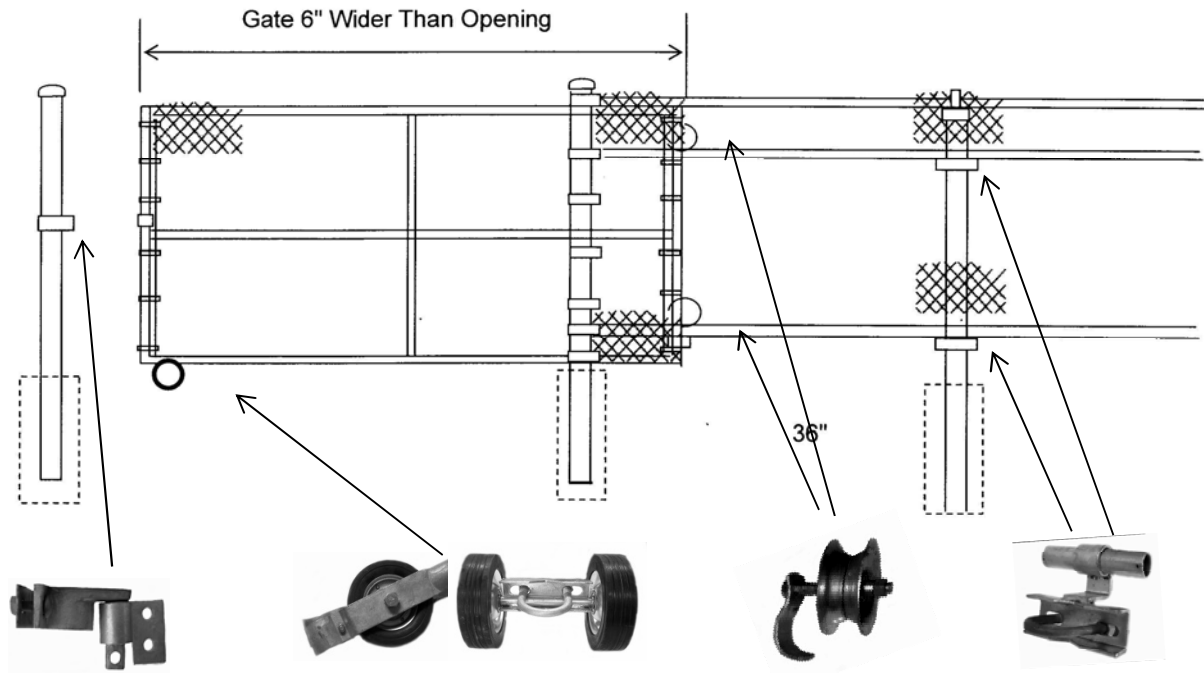
ANCHOR INDUSTRIAL DOUBLE DRIVE LATCH & DROP ROD

Welded on to gates.

DD-2A	2" x 2" Latch		10	\$6.43
DR-26A	1-1/16" x 26" Drop Rod		10	\$22.32



ROLLING GATE HARDWARE



FITTINGS NEEDED FOR THE INSTALLATION OF A ROLLING GATE:

- (1) - Front Wheel - Single or Double Wheel Carrier
- (1) - Locking Device
- (4 - 6) - Track Brackets (To attach 1-5/8" pipe to line and gate posts.)
- (2) - Rear Wheel for Track
- (2) - Brackets for Rear Wheels (Attach to the gate frame)

Code	Item	Wt. Each	Price
<u>SINGLE WHEEL CARRIER</u>			
SWC-156	1-5/8" Frame - 6" Wheel	5	\$19.28
SWC-158	1-5/8" Frame - 8" Wheel	6	\$23.45
SWC-206	2" Frame - 6" Wheel	5	\$24.65
SWC-208	2" Frame - 8" Wheel	6	\$30.52

RESIDENTIAL DOUBLE WHEEL CARRIER

DWC-6R	1-5/8" or 2" - 6" Wheel	7	\$33.39
DWC-8R	1-5/8" or 2" - 8" Wheel	10	\$33.88

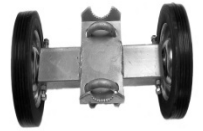


Code	Item	Wt. Each	Price
------	------	-------------	-------

ROLLING GATE HARDWARE

INDUSTRIAL DOUBLE WHEEL CARRIER

DWC-6I	6" Wheel		\$38.78
DWC-8I	8" Wheel		\$39.80



PNEUMATIC DOUBLE WHEEL CARRIER — 10" WHEELS

DWC-RR	Rut Runner		\$61.88
--------	------------	--	----------------



BRACKET FOR REAR WHEEL — HEAVY DUTY — WITHOUT BOLT

RWB-15	1-5/8" with 5/8" Hole	0.7	\$1.58
RWB-2	2" with 5/8" Hole	0.8	\$1.58



REAR WHEEL — 1-5/8" PIPE TRACK — NEED (2)

RWP-5	5" Diameter Pressed Steel	2.6	\$12.40
-------	---------------------------	-----	----------------



FLAT TRACK BRACKET

FTB	For 1-5/8" Track	1.4	\$8.40
-----	------------------	-----	---------------



RESIDENTIAL TRACK BRACKET — USE (2)-BRACE BANDS

RTB	For 1-5/8" Track	1.1	\$5.78
-----	------------------	-----	---------------



UNIVERSAL TRACK BRACKET — HEAVY DUTY

UTB-152	For 1-5/8" or 2" Post	2.5	\$8.05
UTB-253	For 2-1/2" or 3" Post	2.6	\$6.85



LOK-N-LATCH — USE (2)-BRACE BANDS

LL-STD	Standard for Double Gates		\$13.83
LL-90	Off-set for Single Gates		\$13.83



ROLLO LATCH — MALLEABLE — FOR 1-5/8" or 2" FRAMES

Also need (2)-heavy bands to attach female piece to the gate post.

MP-15/2	Male and Female Parts		\$5.57
---------	-----------------------	--	---------------



Code	Item	Wt. Per Each	Bundle Quantity	Price
------	------	-----------------	--------------------	-------

CANTILEVER GATE FITTINGS

CANTILEVER ROLLER ASSEMBLY

CR-3H	3" x 2-1/2"	15.8	4	\$117.78
CR-4H	4" x 2-1/2"	18	4	\$121.14
CR-65H	6-5/8" x 2-1/2"		4	\$160.83

An 8-5/8" cantilever roller is available, but not a Hampden roller.



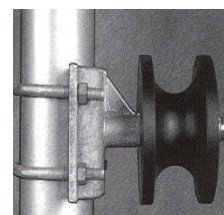
CANTILEVER ROLLER ASSEMBLY

CR-3HI	3" x 2-1/2"	17	4	\$63.45
CR-4HI	4" x 2-1/2"	18	4	\$67.83



CANTILEVER ROLLERS — NYLON (DAC) 2,200#

CR-P	4" x 2-1/2"	11	4	\$183.54
CR-P65	6-5/8" x 2-1/2"	15	4	\$280.90



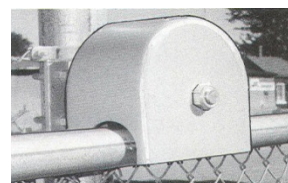
CANTILEVER ROLLERS — IMPORT — NYLON

CR-3PI	3" x 2-1/2" (Each)	13	4	\$106.05
CR-4PI	4" x 2-1/2" (Each w/Cover)	14	4	\$115.86

FOR SAFETY - CANTILEVER COVERS ARE STRONGLY RECOMMENDED FOR ALL GATES

CANTILEVER COVER — POLYETHYLENE PLASTIC

CR-PC	Roller Cover	3	1	DAC ONLY	\$55.68
CC-V	Roller Cover (Pair - fitting Poly Import & Steel) 1 Top and 1 Bottom - Need 2 for 4 Rollers				\$56.98



Code	Item	Wt. Per Each	Bundle Quantity	Price
------	------	-----------------	--------------------	-------

CANTILEVER GATE FITTINGS

CANTILEVER BARBWIRE ARM

Welded on to a heavy steel clamp.

CANT-ARM	2"	7	12	\$12.61
----------	----	---	----	----------------



CANTILEVER GATE LATCH

CGL-2	2" Latch Piece	7.9	1	\$2.58
-------	----------------	-----	---	---------------

CPL-3	For 3" Post	5.3	8	\$14.66
-------	-------------	-----	---	----------------



CPL-4	For 4" Post	6.9	8	\$17.23
-------	-------------	-----	---	----------------



AUTO GATE RECEIVER - UL325 COMPLIANT

MM-4C	M & M Latch Receiver			\$112.06
-------	----------------------	--	--	-----------------

MANUAL GATE RECEIVER

Adjustable from 3" to 7".

MAC-3C	3" Gate Post			\$127.48
--------	--------------	--	--	-----------------

MAC-4C	4" Gate Post			\$127.83
--------	--------------	--	--	-----------------



GATE REPLACEMENT FITTINGS

GRA-LH	Guide Roller Assembly - Right Hand			\$122.05
--------	------------------------------------	--	--	-----------------

GRA-RH	Guide Roller Assembly - Left Hand			\$122.05
--------	-----------------------------------	--	--	-----------------

TA-A	Anchor Truck Assembly			\$146.15
------	-----------------------	--	--	-----------------

SB-A	Slide Gate Stop			\$9.14
------	-----------------	--	--	---------------

TB-A3	3" Track Bracket			\$34.43
-------	------------------	--	--	----------------

TB-A4	4" Track Bracket			\$63.84
-------	------------------	--	--	----------------

Code	Item	Wt. Each	Price
------	------	-------------	-------

OVERHEAD SLIDE GATE HARDWARE

OVERHEAD "I" BEAM — GALVANIZED — 4" x 6" — 12-1/2 # / FT

IBeam-20	20'	250	\$541.04
IBeam-40	40'	500	\$1,082.09



OVERHEAD SLIDE GATE HARDWARE — MALLEABLE

While Supply Lasts.

OSG-TBM	4" Track Bracket	1	\$71.30
---------	------------------	---	---------



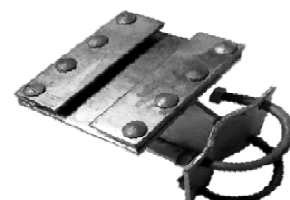
TROLLEY ASSEMBLY — PRESSED STEEL

OSG-TPH	Horizontal Attac	7	\$57.40
OSG-TPH-D	Horizontal Double Wheels		\$113.57
OSG-TPV	Vertical Attachm	7	\$49.84



BEAM HANGER ASSEMBLY

OSG-H3	3" Post	12	\$27.76
OSG-H4	4" Post	13	\$45.21
OSG-H6*	6-5/8" Post	20	\$84.53
OSG-H4D	4" Post - Double	15	\$52.51
OSG-SP	Splice Plate	1	\$3.04



GUIDE ASSEMBLY

OSG-G3	3" Post	6	\$18.68
OSG-G4	4" Post	7	\$23.48



STOP ASSEMBLY

OSG-S3	3" Post	6	\$22.08
OSG-S4	4" Post	7	\$22.72
OSG-S6*	6-5/8" Post	9	\$25.23



LOCKING STOP ASSEMBLY

OSG-L3	3" Post	6	\$13.87
OSG-L4	4" Post	7	\$15.13
OSG-L6*	6-5/8" Post	9	\$18.30
OSG-LB2	2" Locking Brack	3	\$1.51



* Discontinued Items - Limited Quantities Available

Code	Item	Wt. Each	Price
------	------	-------------	-------

BARN TRACK FITTINGS

BARN TRACK — GALVANIZED — DOUBLE TRACK NEEDS TRACK BRACKETS

This track will support a door of 400 pounds.

CT-10D	10' Track	17	\$50.55
CT-12D	12' Track	20	\$60.70
CT-16D	16' Track	27	\$80.99
CT-20D	20' Track	34	\$101.21
CT-24D	24' Track	41	\$121.44



TROLLEY

CT-T	Trolley (Pair)	\$84.20
------	----------------	----------------



TRACK BRACKETS

CT-BS	Single Track Bracket — Includes Sleeve	\$24.65
CT-BD	Double Track Bracket	\$33.17
	Includes (2)-Sleeves	
CT-FEB	Fixed End Bracket	\$13.30
CT-SR	Bottom Guide	\$24.11



Single track with watershed is available. This mounts on to a building.

PANIC BAR

STAINLESS STEEL

PB-SS	Panic Bar	\$435.90
-------	-----------	----------

Gooseneck Stands

GOP-GSR2	2" Round Gooseneck Stand Black	60.00
----------	--------------------------------	-------

	2 1/2" Round Gooseneck Stand Black	70.00
--	------------------------------------	-------

- Sch 40 Pipe
- 3/8" x 6" x 6" Base Plate Welded to Stand
- Base Plate cut out to accept 1" Conduit Extensions
- 1/4" x 4" x 4" Accessory Mounting Plate Welded to Stand
- Accessory Plate Punched to Accept Most Accessories
- 42" Height from Anchor Plate to Center of Stand
- 12" Extension of Accessories from Center of Stand
- 4 - 1/2" x 3 3/4" Wedged Anchors Included
- 4 - 1/4" x 3/4" Accessory Mounting Hardware Included
- 8" Diameter Aluminum Collar conceals Anchor Bolts
- Gloss Black Powder Coated Finish on Stand
- Custom Designs Available

	2" Square Gooseneck Stand Black	68.00
--	---------------------------------	-------

	2 1/2" Square Gooseneck Stand Black	72.00
--	-------------------------------------	-------

	2" Square Duplex Gooseneck Stand Black	115.00
--	--	--------

- 2" Sq x 14 ga Steel Tubing or 2 1/2" x 11ga Steel Tubing
- 3/8" x 6" x 6" Base Plate Welded to Stand
- Base Plate cut out to accept 1" Conduit Extensions
- 1/4" x 4" x 4" Accessory Mounting Plate Welded to Stand
- Accessory Plate Punched to Accept Most Accessories
- 42" Height from Anchor Plate to Center of Stand (42" & 84" Duplex)
- 12" Extension of Accessories from Center of Stand
- 4 - 1/2" x 3 3/4" Wedged Anchors Included
- 4 - 1/4" x 3/4" Accessory Mounting Hardware Included
- Gloss Black Powder Coated Finish on Stand

